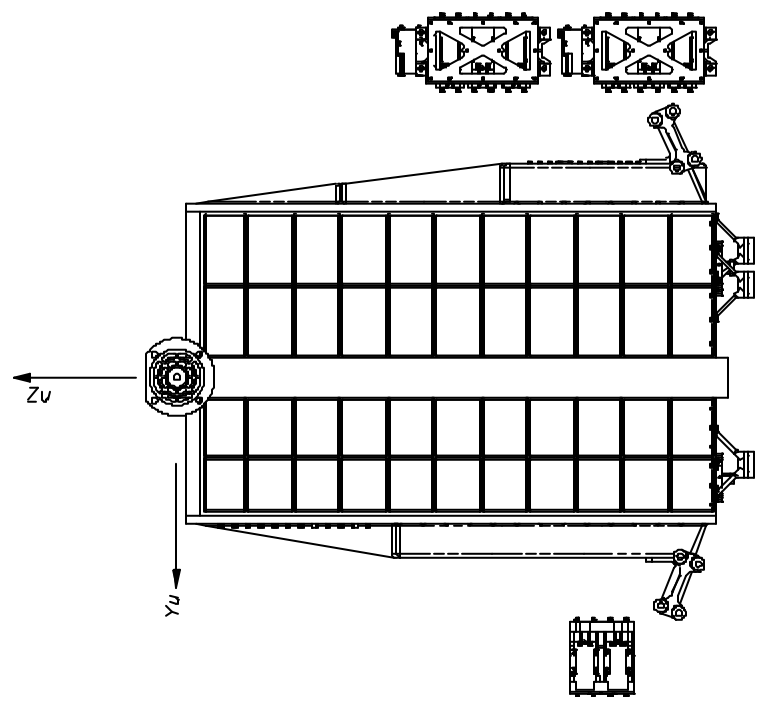
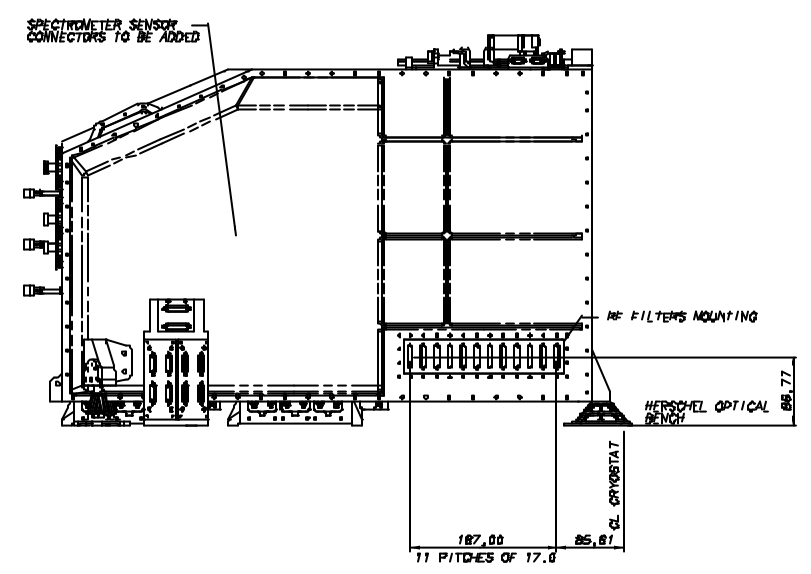
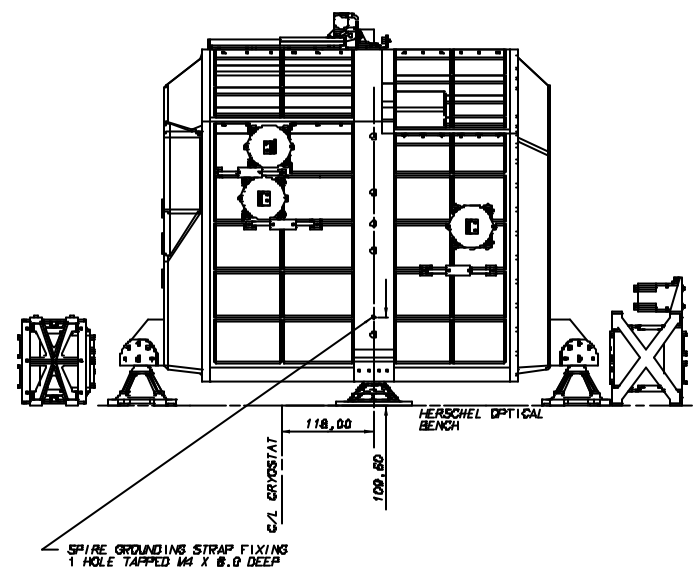
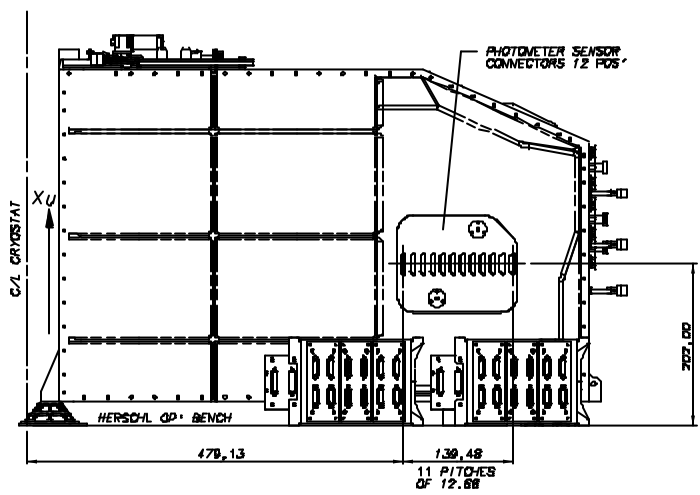


DRAWING No.  
A1 5264 300 sht 6

THIRD ANGLE PROJECTION

DO NOT SCALE

USED ON  
HERSCHEL



VIEW ON Xu (UNDERSIDE OF SPIRE)

NOTE :-  
1. ALL DIMENSIONS AT ROOM TEMPERATURE

CHECKED	13	19/11/01	UPDATED RE FILTER & PHOT CONNECTORS ADDED, FRONTAL PLATE & M4 FRAME MOUNT DIM ADDED, SHEET 7 ADDED.	PROTECTIVE FINISH	MATERIAL & SPEC.	TOLERANCES UNLESS OTHERWISE STATED -	DEPARTMENT OF SPACE AND CLIMATE PHYSICS UNIVERSITY COLLEGE LONDON MULLARD SPACE SCIENCE LABORATORY, HOLMBURY ST. MARY, DORKING, SURREY.	DRAWING No
	12	4/8/01	AUGUST ISSUE SHUTTER MECHANISM ADDED, COIL STRAPS AND MOUNTINGS ADDED, LINE WEIGHTS MODIFIED	AS LISTED	AS LISTED	LINER +/- 0.10 ANGULAR +/- 0*15'		
TRACED PBG	11	30/7/01	RE-DRAWN. 2X DOUBLE HARNESS HOLES PROVIDED (SHT 8) SENSOR CONNECTORS ADDED TO PHOT CONNECTOR 3 POS	ESTD MT. 50kg (INC. CONT.)	DIMENSIONS IN mm	SCALE 1:4	TITLE SPIRE INTERFACE (ELECTRICAL)	A1 5264 300 sht 6
	10	28/6/01	DRIVING SHEETS 3, 4 & 8 ADDED. DIMENSIONS SHOWN ON OTHER SHEETS REMOVED FROM THIS SHEET	ACTL WT.				
DRAWN AJC	ISSUE	DATE	AMENDMENT	SP/IRG Flight				
	1	24/11/01		COMPUTER FILE				