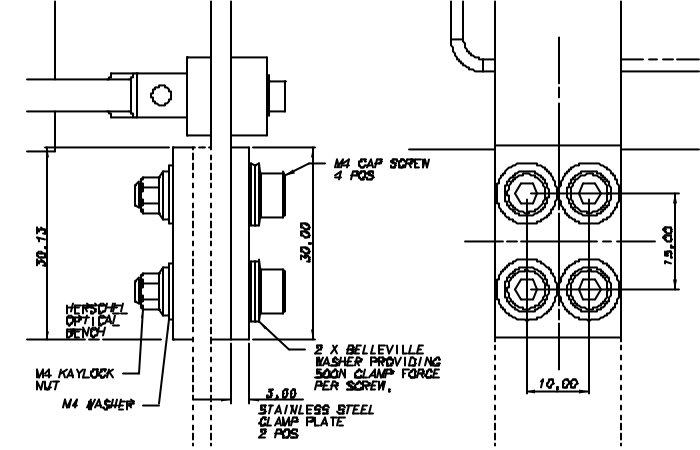
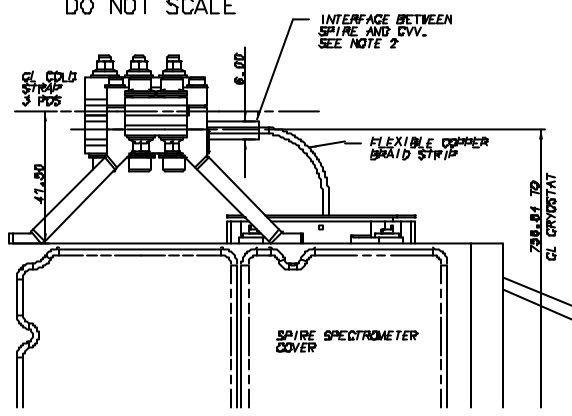


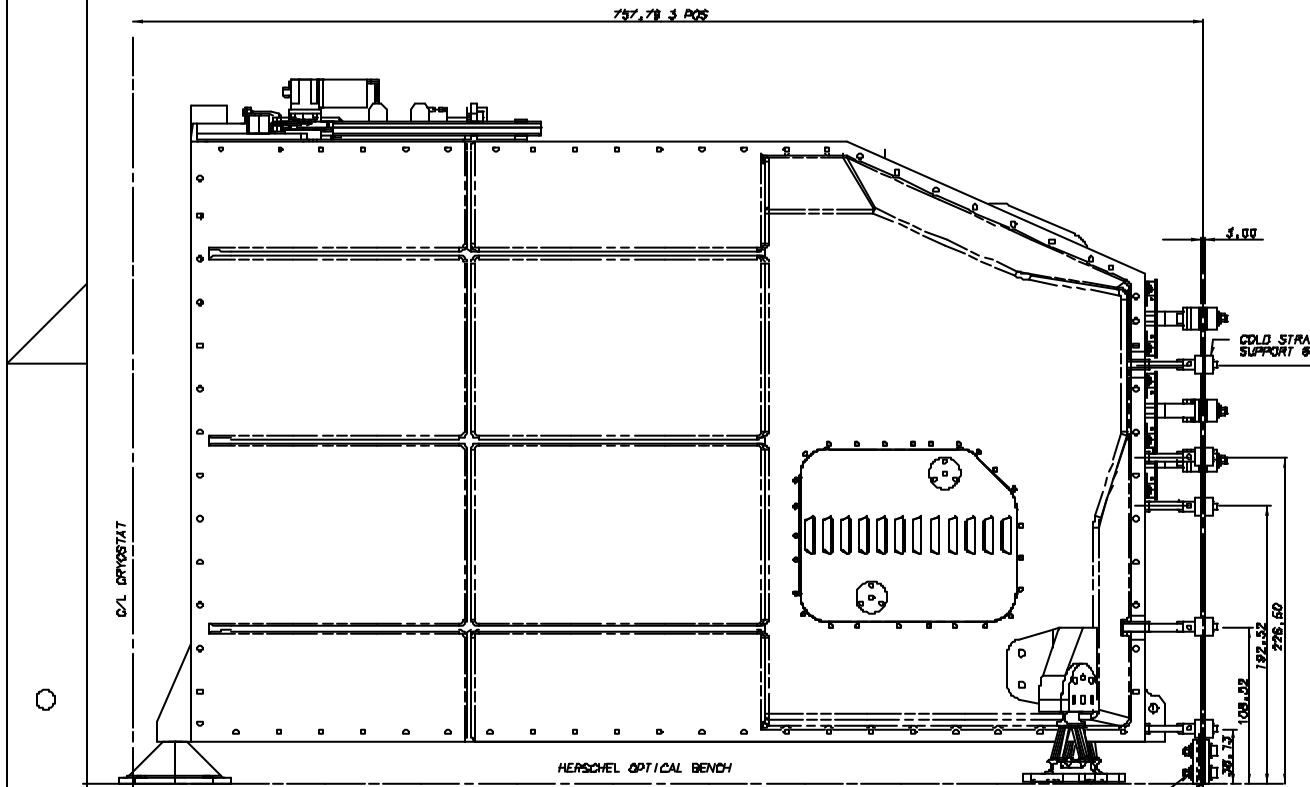
DETAIL "A"

NOTE:-
1. DIMENSIONS OF ALL LEVEL 0° CONNECTIONS ARE THE SAME BUT EVAPORATOR CONNECTION IS ROTATED 180° ABOUT CL.
2. THERMAL STRAP INTERFACE FOR SPIRE STOPS AT CONNECTION WITH CVT STRAP AND SUPPORT.
3. ELECTRICAL INSULATION REQUIRED ON CVT SIDE, REF 11D-B

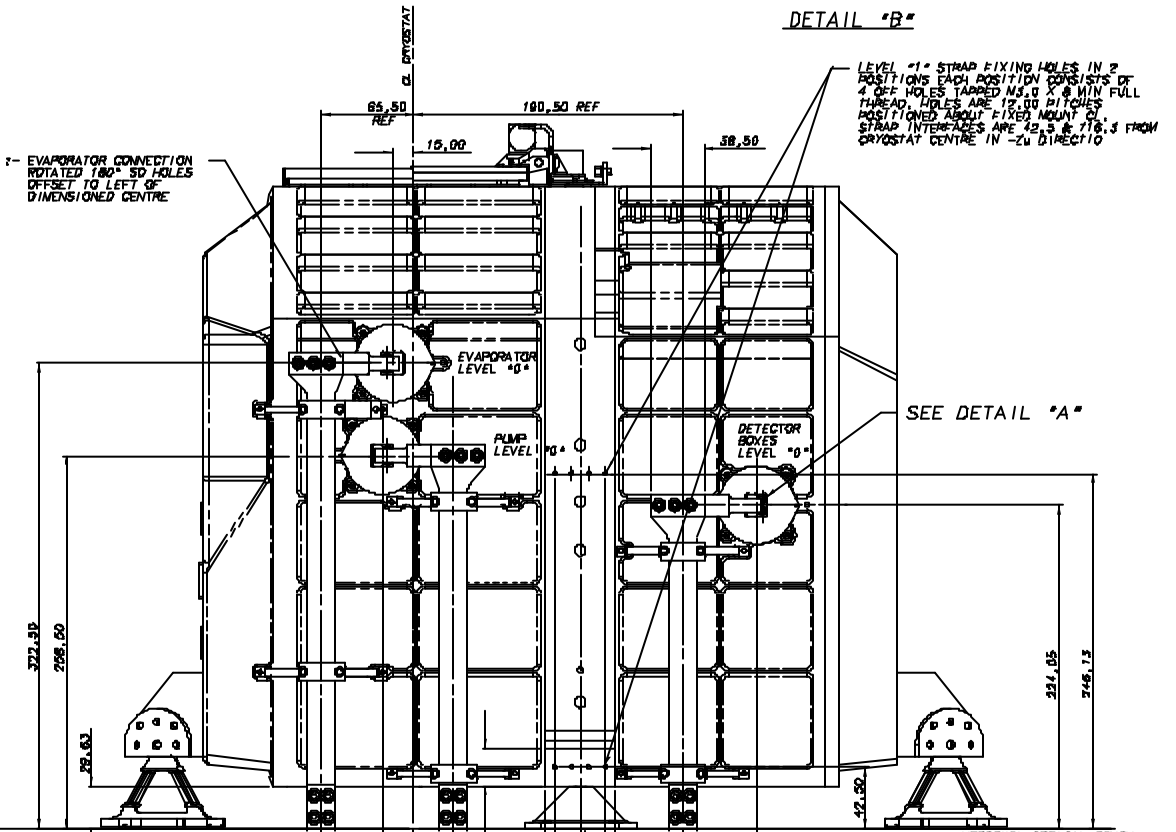


DETAIL "B"

LEVEL 1° STRAP FIXING HOLES IN 2 POSITIONS EACH POSITION CONSISTS OF 4 OFF HOLES TAPPED M4.0 X 8 MIN FULL THREAD. HOLES ARE 17.00 PITCHES POSITIONED ABOUT FIXED MOUNT CL. STRAP INTERFACES ARE 42.5 ± 18.3 FROM DRYORSTAT CENTRE IN -ZU DIRECTION



NOTE 1:- EVAPORATOR CONNECTION ROTATED 180° SO HOLES OFFSET TO LEFT OF DIMENSIONED CENTRE



NOTE :-
1. POSITIONAL TOLERANCE BETWEEN CENTRES OF HOLES IN AN INDIVIDUAL PART OF SPIRE IS 50.1
2. POSITIONAL TOLERANCE ON DIMENSIONS FROM DRYORSTAT CENTRE AND FIRST OPTICAL BENCH TO STRAP FIXING HOLES IS 81.00 DUE TO TOLERANCE BUILT UP ON BASE AND COOLER PIPE PARTS. SPACE LIMIT STRAPS SHOULD BE ABLE TO ACCOMMODATE THIS

CHECKED	DATE	AMENDMENT	BY
15	27/04/01	THERMAL STRAP INTERFACE MODIFIED. LEVEL 1 STRAP FIXING HOLES MOVED.	
14	23/11/01	SENSE OF GRAVITY ADDED TO BIT 1. J-PET DESIGN UPDATED. STAY OUT HOLES REMOVED.	
13	19/11/01	LINKED W/1 FILTERS & PUMP CONNECTIONS ADDED. FINAL PLANE & M4 FRAME MOUNT DIM ADDED. SHEET 7 ADDED.	
12	4/9/01	AUGUST ISSUE SHUTTER MECHANISM ADDED. COLD STRAPS AND MOUNTINGS ADDED. LINE WEIGHTS VERIFIED.	
DRANN	ISSUE	DATE	AMENDMENT
AJC	1	24/11/01	COMPUTER FILE

NOTE:-
ALL DIMENSIONS AT ROOM TEMPERATURE

PROTECTIVE FINISH AS LISTED	MATERIAL & SPEC. AS LISTED	TOLERANCES UNLESS OTHERWISE STATED - LINEAR +/- 1.0 ANGULAR +/- 0°15'
ESTD WT. 60kg(INC. CONT.)	DIMENSIONS IN mm	SCALE 1:2 & 1:1
ACTL WT.		

DEPARTMENT OF SPACE AND CLIMATE PHYSICS UNIVERSITY COLLEGE LONDON MULLARD SPACE SCIENCE LABORATORY, HOLMBURY ST. MARY, DORKING, SURREY.	
TITLE SPIRE INTERFACE (THERMAL STRAP CONNECTIONS)	DRAWING No A1 5264 300sht5
SHEET 5 OF 7	