

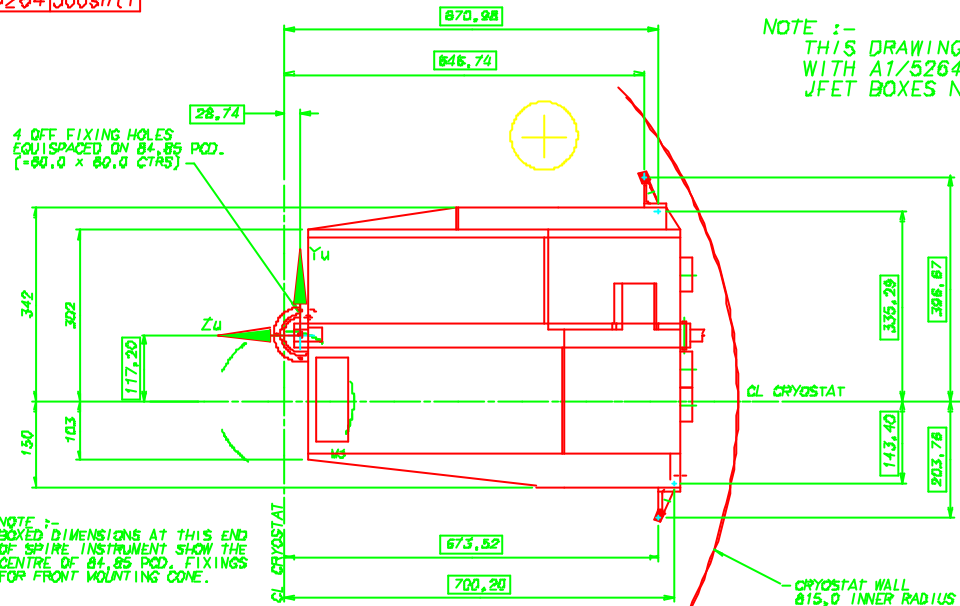
RELATIVE No.  
A15264/300sht1

THIRD ANGLE PROJECTION

DO NOT SCALE

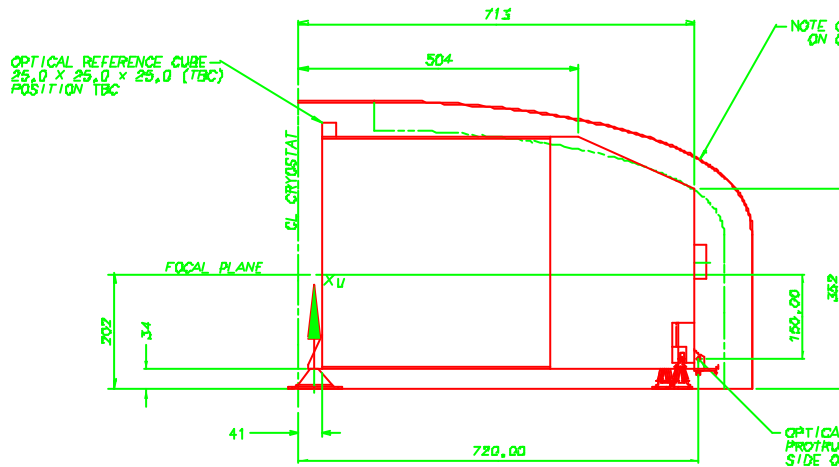
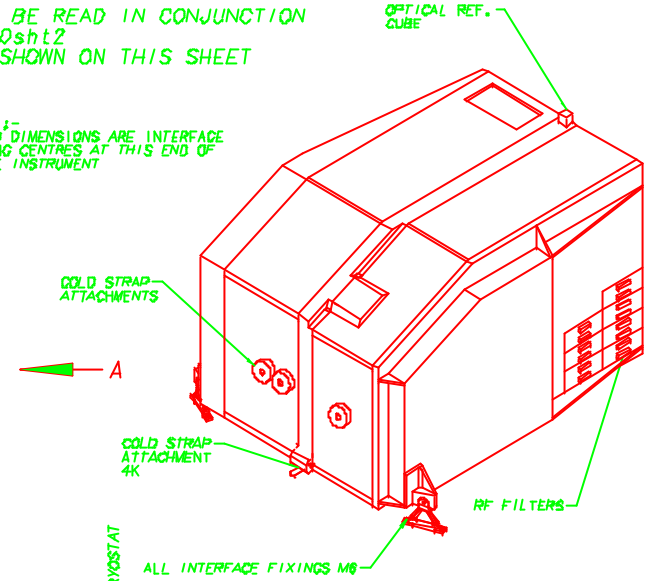
USED ON  
FIRST

NOTE :-  
THIS DRAWING TO BE READ IN CONJUNCTION  
WITH A1/5264/300sht2  
JFET BOXES NOT SHOWN ON THIS SHEET



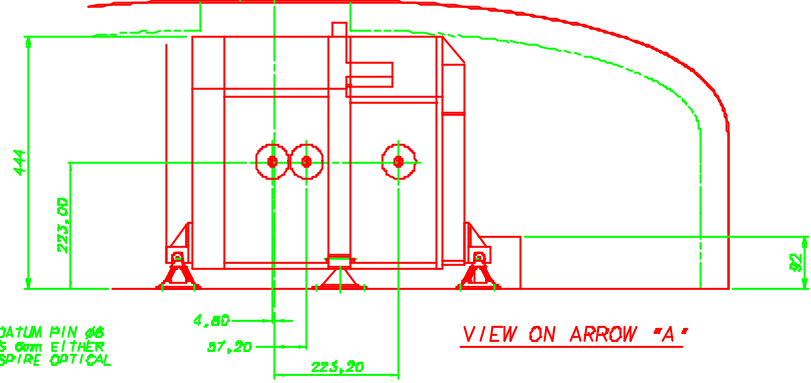
NOTE :-  
BOXED DIMENSIONS AT THIS END  
OF SPIRE INSTRUMENT SHOW THE  
CENTRE OF 84.85 POD. FIXINGS  
FOR FRONT MOUNTING CONE.

NOTE :-  
BOXED DIMENSIONS ARE INTERFACE  
FIXING CENTRES AT THIS END OF  
SPIRE INSTRUMENT



NOTE CRYOSTAT ONLY SECTIONED  
ON CL (SIDE AND END VIEWS)

OPTICAL DATUM PIN #6  
PROTRUDES 0mm EITHER  
SIDE OF SPIRE OPTICAL  
BENCH



CHECKED	1	18/10/00	18/10/00	18/10/00	18/10/00
TRACED	3	07/01/00	07/01/00	07/01/00	07/01/00
DRAWN	1	06/11/99	06/11/99	06/11/99	06/11/99

PROTECTIVE FINISH	-
MATERIAL & SPEC.	-
TOLERANCES UNLESS OTHERWISE STATED -	
LINEAR	± 0.10
ANGULAR	± 0°18'
DATE	18/10/00
ACTL. VT.	

SCALE	1:1
DIMENSIONS IN	mm

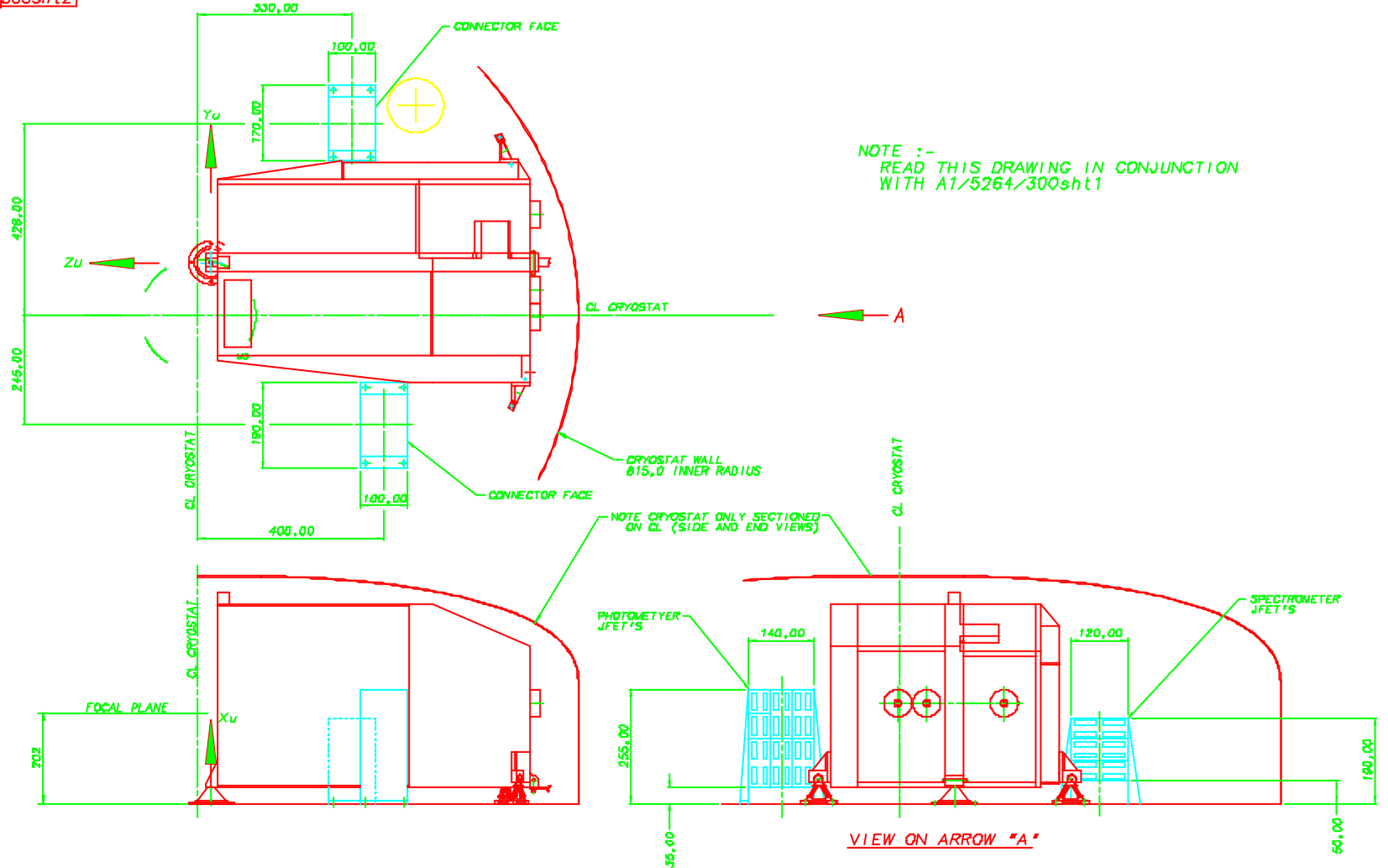
DEPARTMENT OF SPACE AND CLIMATE PHYSICS UNIVERSITY COLLEGE LONDON MULLARD SPACE SCIENCE LABORATORY, HOLMBURY ST. MARY, DORKING, SURREY.	
TITLE	PROVISIONAL SPIRE (FIRST) INTERFACE
DRAWING No	A15264/300sht1

DRAWING No.  
A1/5264/300sht2

THIRD ANGLE PROJECTION

DO NOT SCALE

USED ON  
FIRST



CHECKED			
TRACED			
DRAWN	7	10/18/00	REVISIT TO BE CREATED FOR SHIP REVISABLE JFET LASER
	1		

PROTECTIVE FINISH	-
MATERIAL & SPEC.	-
TOLERANCES UNLESS OTHERWISE STATED -	
LINEAR	± 0.1
ANGULAR	± 0° 15'
EXGTS WT.	
AUFLT WT.	

DIMENSIONS IN	mm
SCALE	1:4

DEPARTMENT OF SPACE AND CLIMATE PHYSICS UNIVERSITY COLLEGE LONDON MULLARD SPACE SCIENCE LABORATORY, HOLMBURY ST. MARY, DORKING, SURREY.	
TITLE	PROVISIONAL SPIRE (FIRST) INTERFACE
DRAWING No.	A1/5264/300sht2