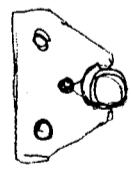
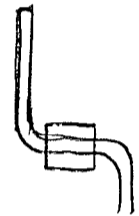
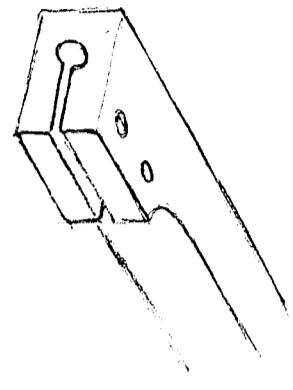
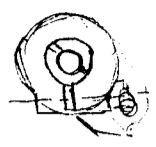
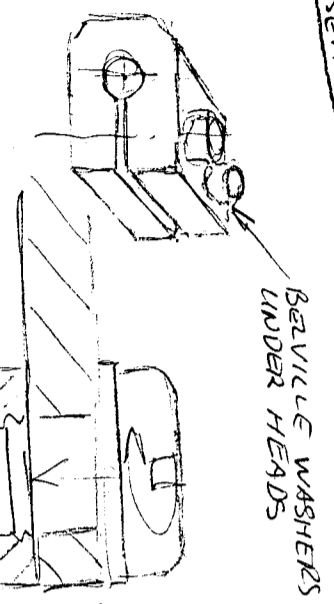


COLD STRAP ASSEMBLY IN VARIOUS VIEWS OF STRAP
 & JOINED TO DETECTORS LEGACY ASSY IS FITTED
 TO BACK COVER WHICH CARRIES MOUNTS TO
 ORB. FEEL ZK BOX - CAN'T REMOVE JUST ONE DETECTOR!

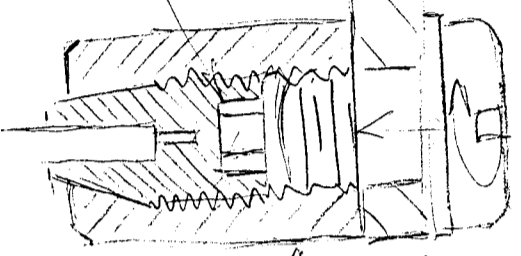


INVAR WASHER
 FORKING SCREW TO SEPARATE

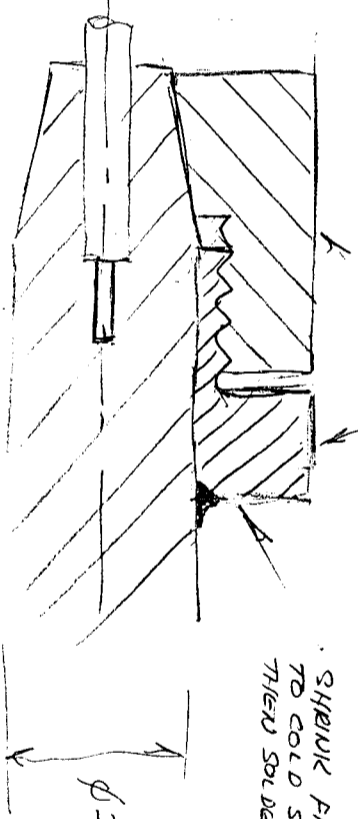


BEVILLE WASHERS
 UNDER HEADS

HEX SKT
 OR SLOT



HEX

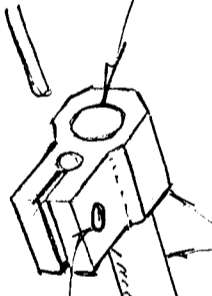


HEX

SHANK FIT
 TO COLD STRAP
 THEN SOLDER

$\phi 3$

ERS WELD.

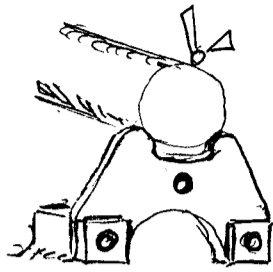


OXYGEN FREE COPPER

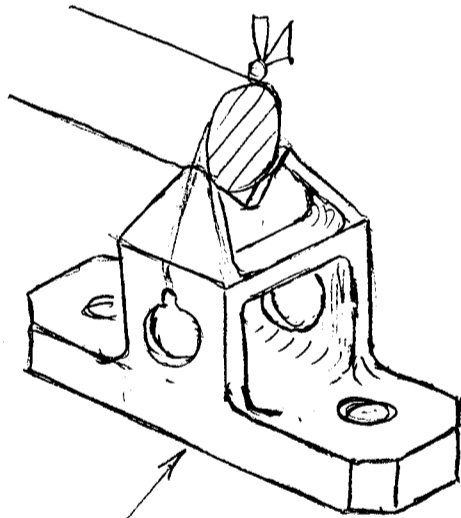
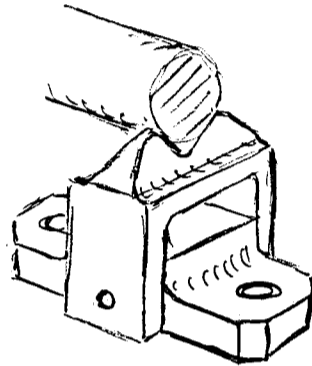
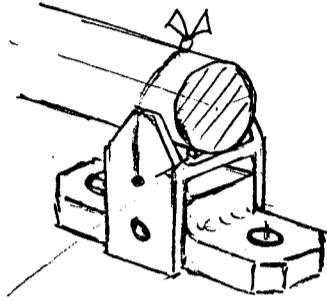
$\phi 3$

CLAMP SCREW
 ST. STEEL WITH
 INVAR WASHERS
 UNDER HEAD & NUT

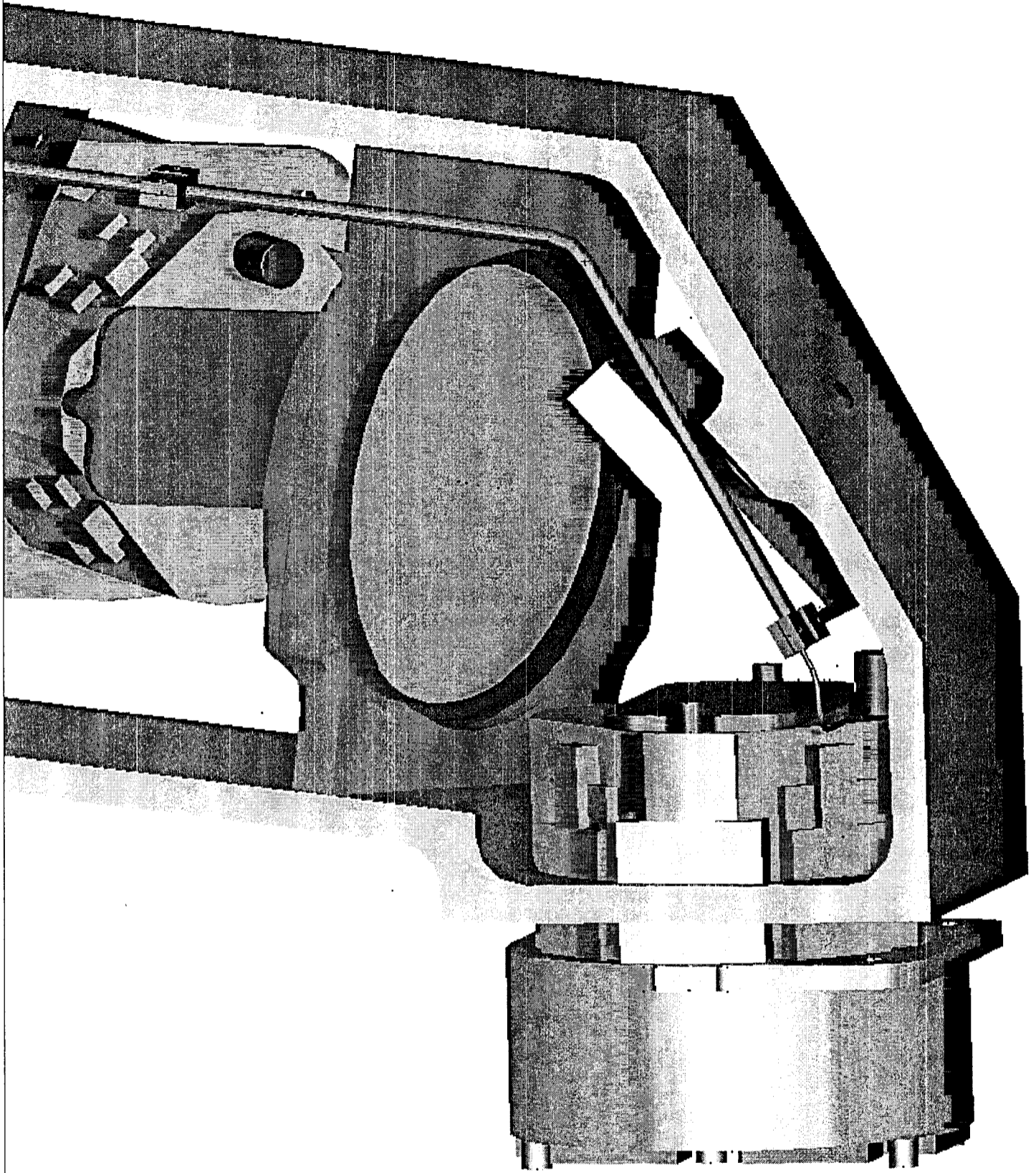
UNITS 20
 PP 100
 MFC 560
 WIP 160
 IMMEDIATE VERT 180
 FROM 170

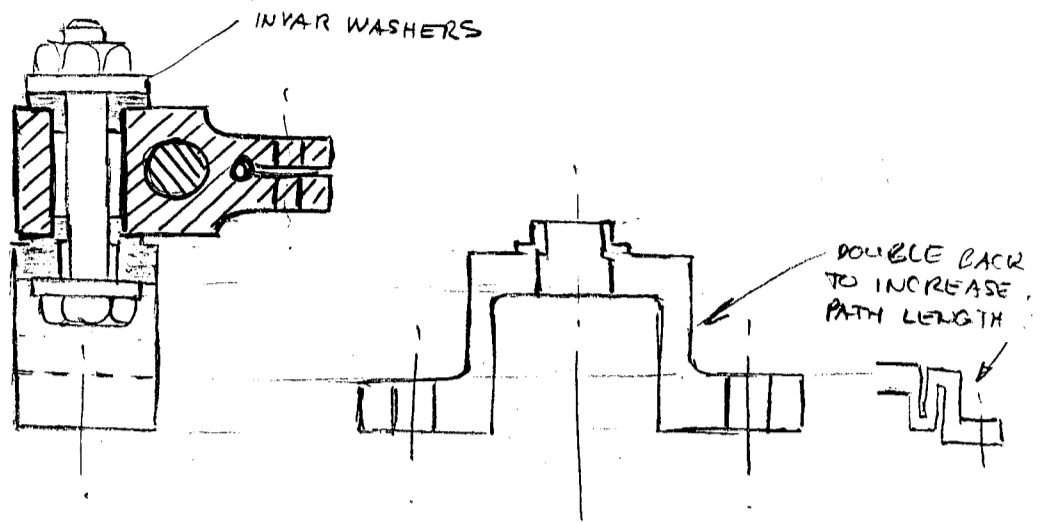


CENTRE "PIP"
SUPPORT



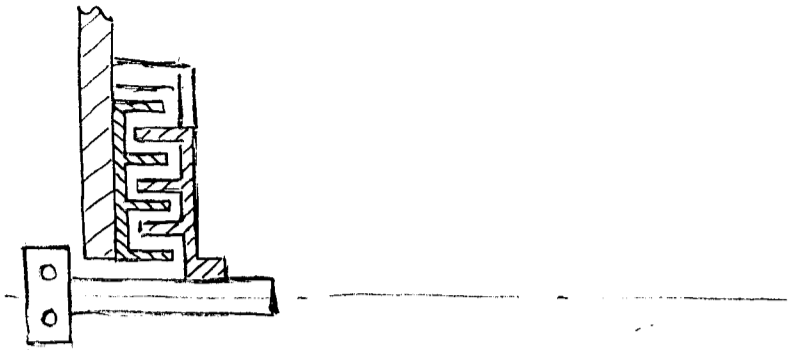
VESPEL?
SP22 (BLACK)

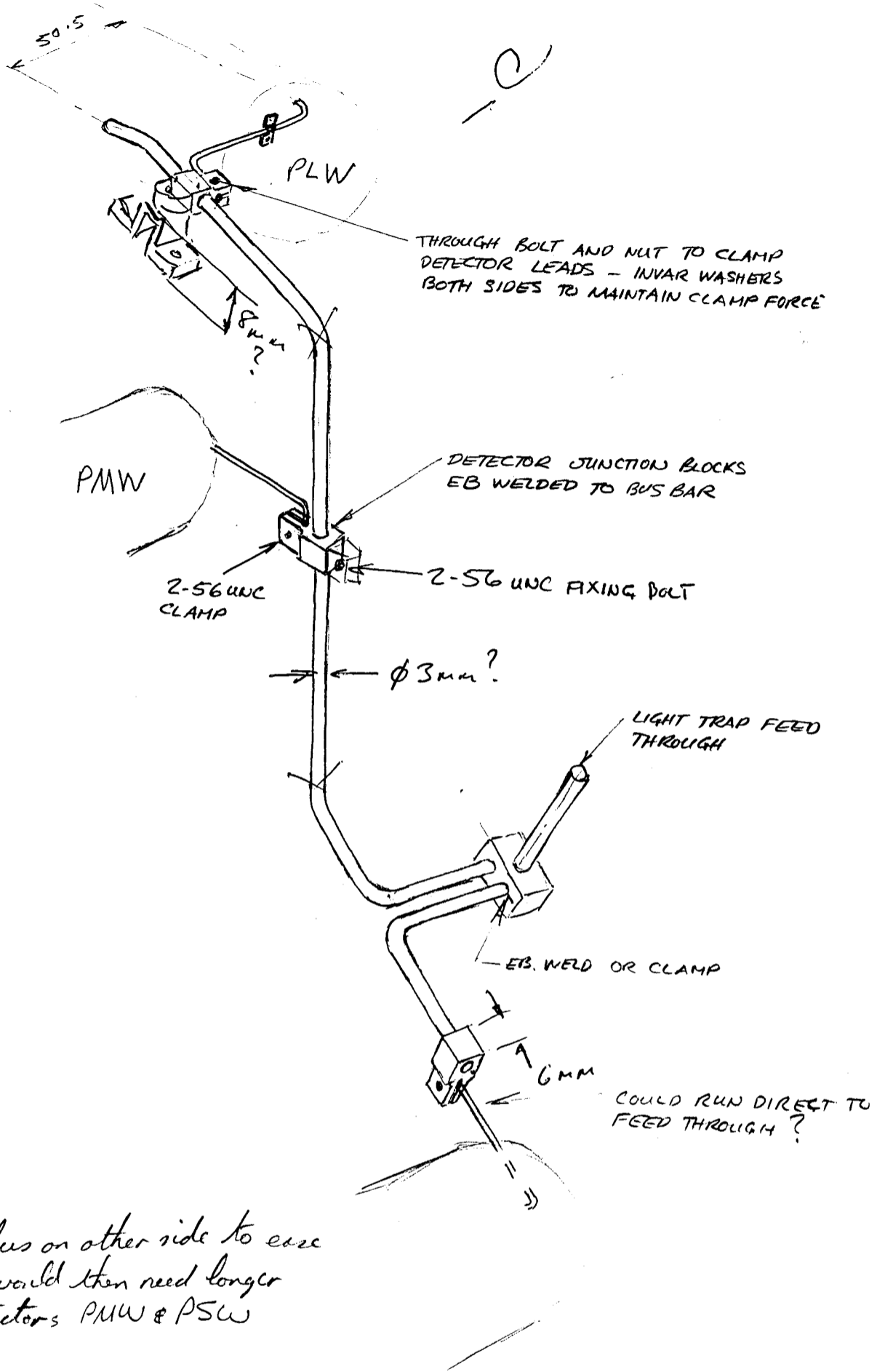




COMBINED BUS BAR SUPPORT / DETECTOR
STRAP JUNCTION

LIGHT TRAP EXIT OF STRAP FROM
2K BOX





Could run bus on other side to ease
 access but would then need longer
 feeds to detectors PMW & PSW